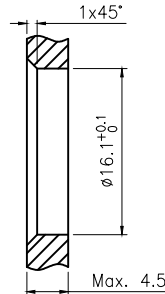
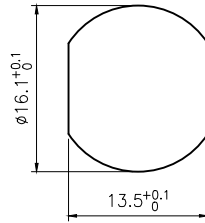
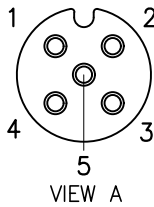
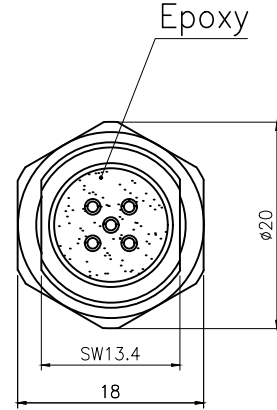
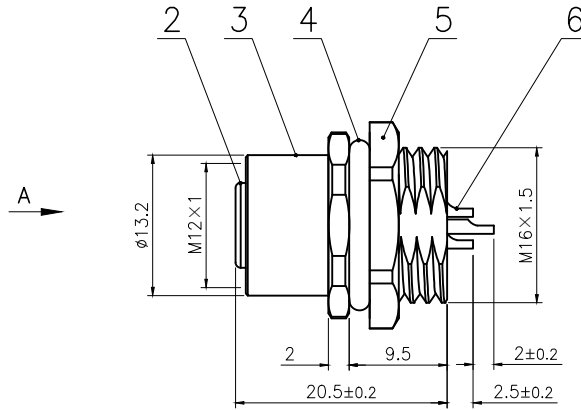
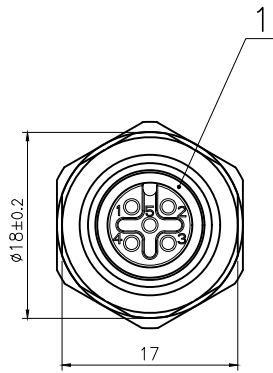


Rev.	Change Description	ECN #	Date

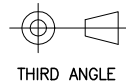


面板开孔尺寸

6	M12 1.0 焊线式母针	磷铜	镀金	pc	5
5	六角螺母M16×1.5 单边倒角	黄铜	镀镍	pc	1
4	M12 法兰座外壳专用O型圈 $\phi 16 \times 2$	橡胶	/	pc	1
3	M12 板前安装插座母头外壳	黄铜	镀镍	pc	1
2	M12 带倒角常规母胶芯 5芯	尼龙	/	pc	1
1	M12 母头胶芯O型圈 $\phi 9 \times \phi 6 \times 1.5$	橡胶	/	pc	1
No.	Specification	Material	Treat	Unit	Q'ty

技术参数		材料	
连接方式:	螺纹连接	外壳材料:	黄铜, 镀镍
接线方式:	焊线	接触体材料:	磷铜, 镀金
编码:	A	绝缘体材料:	增强尼龙, 黑色
污染等级:	3	密封材料:	橡胶, 黑色
温度范围:	-40°C ~ +80°C		
防护等级:	IP67		
插拔周期:	≥500		
额定电压:	60V AC/DC		
额定电流:	4A		
接触电阻:	≤5 mΩ		
绝缘电阻:	≥100 MΩ		
所有材料均符合RoHS要求			

GENERAL TOLERANCE (UNLESS SPECIFIED)	≤10	±0.1	DWN	DATE	2022.7.18	CAZN 正成
	<10~≤20	±0.2		W.M		
<20~≤50	±0.5	Angle	±1°	APVD	DATE	TITLE
				UNIT	REV	PART NO
				MM	A	120052-02A000000
				SIZE	SHEET	DRAWING NO
				A4	1 OF 1	M12-CB-S5



THIRD ANGLE